

# ANTIPODES

MANNED SUBMERSIBLE

**UTILIZED FOR DEEP-SEA EXPEDITIONS**, OceanGate's flagship *Antipodes* is a manned submersible that enables commercial and scientific applications for researchers, scientists, filmmakers, and content providers. This unique submersible comfortably accommodates a crew of 5, including a pilot, and has a 305-meter (1,000 feet) depth rating, opening access to much of the world's continental shelves and the biology that exists in those areas.

## A SUPERIOR PLATFORM FOR DATA COLLECTION, OBSERVATION AND COLLABORATIVE TASK PERFORMANCE

*Antipodes* boasts twin 1.47-meter (58-inch) hemispherical acrylic domes which provide exceptional views for direct scientific observation and filming during deep-sea expeditions. Her capacity allows crew members from multiple disciplines to collaborate in real time, so that inspection is not limited to areas of interest dictated by the operator, but rather by the consensus of those in the vessel, allowing for different perspectives. *Antipodes* is also fully capable, thanks to her full array of



navigational and sonar equipment, of operating around the clock in low visibility and varying weather conditions, making her crews able to conduct timely, efficient surveys of the marine environment. In addition to a standard suite of navigational and sampling equipment, including a manipulator arm, multibeam sonar, and high-def imaging capabilities, *Antipodes* is fully configurable to fit the most complex data collection needs of the research and commercial community.

The **ENHANCED DIVE TIME CAPABILITY** of *Antipodes* offers crews the ability to work in a comfortable, controlled environment on enhanced bottom-time dives in excess of 8 hours, while still maintaining three days of additional life support for a crew of five.

**GLOBAL DEPLOYMENT** is made possible by OceanGate's tested and proven technology, which focuses on quick, efficient transport and deployment of submersibles through our mobile launch, retrieval and transport platforms. Large surface-support vessels are not required for operations, translating to significant cost savings. OceanGate can quickly deploy *Antipodes* after a hurricane, spill, or other event requiring rapid response. *Antipodes*' 6,350 kg (14,000 lbs) weight and 4.5 m x 2.3 m x 2.4 m (15 ft. x 7.5 ft. x 8 ft.) dimensions ensure impressive portability on a variety of ships.

**SAFETY** is of primary concern to OceanGate. Over the course of 1,300 dives in a variety of sea conditions, *Antipodes* has proven to be a safe and effective vessel. We are the only US company that owns, operates and charters a multi-person research submersible. *Antipodes* is classed by the American Bureau of Shipping, is fully insured, and operates under a letter of designation as Oceanographic Research Vessel from the U.S. Coast Guard—permitting us to legally take researchers for hire.

  
OPENTHEOCEANS.COM

Manned  
submersible  
solutions to  
access the  
ocean's resources.

OceanGate, Inc.  
425.939.8409  
info@opentheoceans.com

# ANTIPODES

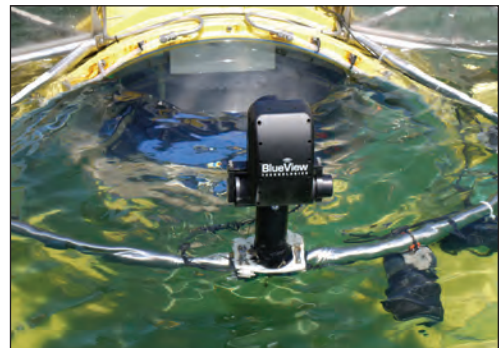
MANNED SUBMERSIBLE

## BENEFITS

- 5-person occupancy allows teams to multi-task and collaborate during each dive
- 1,000-foot depth rating gives access to virtually all of the world's continental shelves and biology below the photic zone
- 1.47-meter (58-inch) hemispherical acrylic domes open up unparalleled views for direct observation and underwater work
- 6,350-kg (7-ton) weight and 4.5 m x 2.3 m x 2.4 m (15 ft. x 7.5 ft. x 8 ft.) dimensions allow for maximum portability on a variety of ships of opportunity
- Enhanced flexibility through customizable configuration, allowing for additional electrical equipment, fiber-optic connectors and hydraulic lines to meet clients' needs.

## NAVIGATION AND SCIENTIFIC EQUIPMENT

- Fluxgate compass
- Depth sounder for altitude off bottom
- Depth gauge
- External temperature probe
- GPS for surface location
- VHF radio for surface to 25' depth communication
- 27kHz Scubaphone with transponder
- Linkquest 1500 tracking system with acoustic messaging option
- Teledyne BlueView 2D and 3D multibeam sonars: (1) P450E-45; (1) P900-130; (1) MB1350-45 (3D imaging)
- PC with dual display of sonar data
- ROS PT10 pan-and-tilt unit
- 6000-lumen white mix LED lights (x2)
- 600-watt and 1000-watt halogen lights



## SPECIFICATIONS

- Seating:** 5 persons (1 pilot + 4 crew)
- Depth:** 305 meters (1,000 feet)
- Dimensions:** 4.5 m x 2.3 m x 2.4 m  
(15 ft x 7.5 ft x 8 ft)
- Crane Weight:** 6,350 kg (14,000 lbs)
- Speed:** 1 knot (cruising), 3 knots (max)
- Propulsion:** Six 5-hp reversible thrusters vectored for 3-axis maneuvering
- Life Support:** 72 hours (w/5 persons)
- Classification:** American Bureau of Shipping (ABS) ★A1 Submersible (ABS ID: 7310882)

  
OPENTHEOCEANS.COM

Manned  
submersible  
solutions to  
access the  
ocean's resources.